



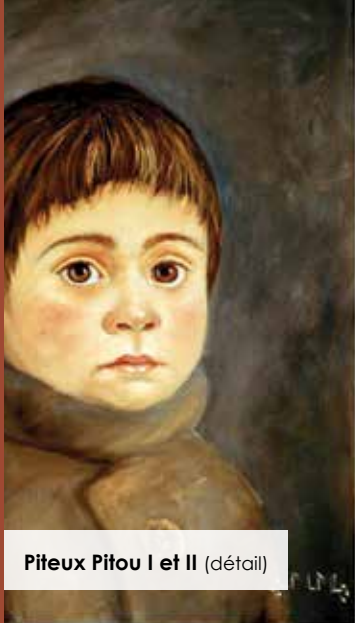
EXHIBITIONS

WINTER-SPRING 2019

OSEZ
la découverte

Princesse d'un désert (détail)
Édith Rémy

MARIE MONTIEL



Piteux Pitou I et II (détail)



January 11 to March 3
Espace Mur-mur des arts

Oil

Marie Montiel's work is centred on the similarities between the emotions and attitudes of humans and animals. Through her paintings, she invites us to observe the parallels between us as well as our particularities.

CHANTAL ST-PIERRE



Déséquilibre (détail)

January 13 to February 17
Galerie Renée-Blain

Mixed techniques

Chantal St-Pierre focuses on the representation of the human body through X-ray imaging: images of bone fracture, screws, metal plates, and more. Using this technique, she infiltrates the body and explores the theme of rupture.

NICOLAS NABONNE



Paul (détail)

January 18 to March 7

Hall des Arts

Oil, acrylic

Through stripped installations, Nicolas Nabonne investigates the coexistence of human and non-human species as well as in the precariousness of life.

A TRIO OF PRINTMAKERS

LAURENCE PRÉVOST, MICHELINE BERTRAND AND CAROLE FISET



Les animaux (détail)

February 24 to March 31
Galerie Renée-Blain

Printmaking and installation

Origo is an introspective dialogue, a questioning and a suspension of the present through the whimsical works of three women printmakers, presented in four themes: in the days of the caveman, bestiary, writing fragment and reliefs.

CONSTANT JEANTY



Solitude (détail)

March 15 to April 25

Hall des Arts

Oil

Constant Jeanty transmits his passion and admiration for the swan in his paintings of this majestic and elegant bird.

CHEN

HAO HUA



Cygnes (2) (détail)

March 15 to April 25

Hall des Arts

Ink

Swans are admired for their graceful figures and expressive, refined appearance. Hao Hua Chen seeks to evoke their elegance and express the majestic beauty of swans and their natural habitat.

SYLVIE CHARTRAND



Figures 6 (détail)

April 7 to May 1
Galerie Renée-Blain

Photography and installation

Sylvie Chartrand explores shadow for its potential to transfigure the human silhouette. Her multidisciplinary approach focuses less on the addition of modes of expression and the blurring of their boundaries than on subtraction, where the forms from the figure are echoed in and inform the image.

CÉLINE LANDRY



Fleur d'eau (détail)

April 7 to May 17
Galerie Renée-Blain

Clay

While femininity is well represented in the themes addressed in Céline Landry's works, her sculptures conceal secrets and tell stories that affect every human being.

RICARDO
LIMA



Cabinet Royal Portugais de Lecture à Rio de Janeiro (détail)

May 3 to June 20

Hall des Arts

Photographie

Ricardo Lima's series *Usque ad coelum*, meaning "to the heavens," consists of 360° architectural photos that let the viewer discover unusual spaces.

ÉDITH
RÉMY



Les couleurs du palais (détail)

May 10 to June 29
Espace Mur-mur des arts

Mixed techniques

Defining herself as a humanist painter, Édith Rémy portrays expressionist depictions informed by human history and territorial geography, in the style of a travel diary.



La prodigieuse inventivité de la vie (détail) by Francine Potvin.
Crédit photo : Michel Dubreuil

CALL FOR ARTIST PORTFOLIOS 2019-2020 EXHIBITIONS

Until March 1

brossard.ca/expos

Exhibition Venues

FREE ENTRY

HALL DES ARTS

City Hall
2001, boul. de Rome | 450 923-6311

Opening hours

Monday to Friday: 8:30 a.m. to 4:30 p.m.

ESPACE
MUR-MUR
DES ARTS

Bibliothèque de Brossard
Georgette-Lepage

7855, av. San Francisco | 450 923-6311

Opening hours

Monday to Friday: 10 a.m. to 9 p.m.
Saturday and Sunday: 10 a.m. to 5 p.m.

GALERIE RENÉE-BLAIN

Centre socioculturel Alphonse Lepage
7905, av. San Francisco | 450 923-6311

Opening hours

Wednesday: 1 p.m. to 5 p.m. and
7 p.m. to 9 p.m.
Thursday and Friday: 7 p.m. to 9 p.m.
Sunday: 1 p.m. to 5 p.m.